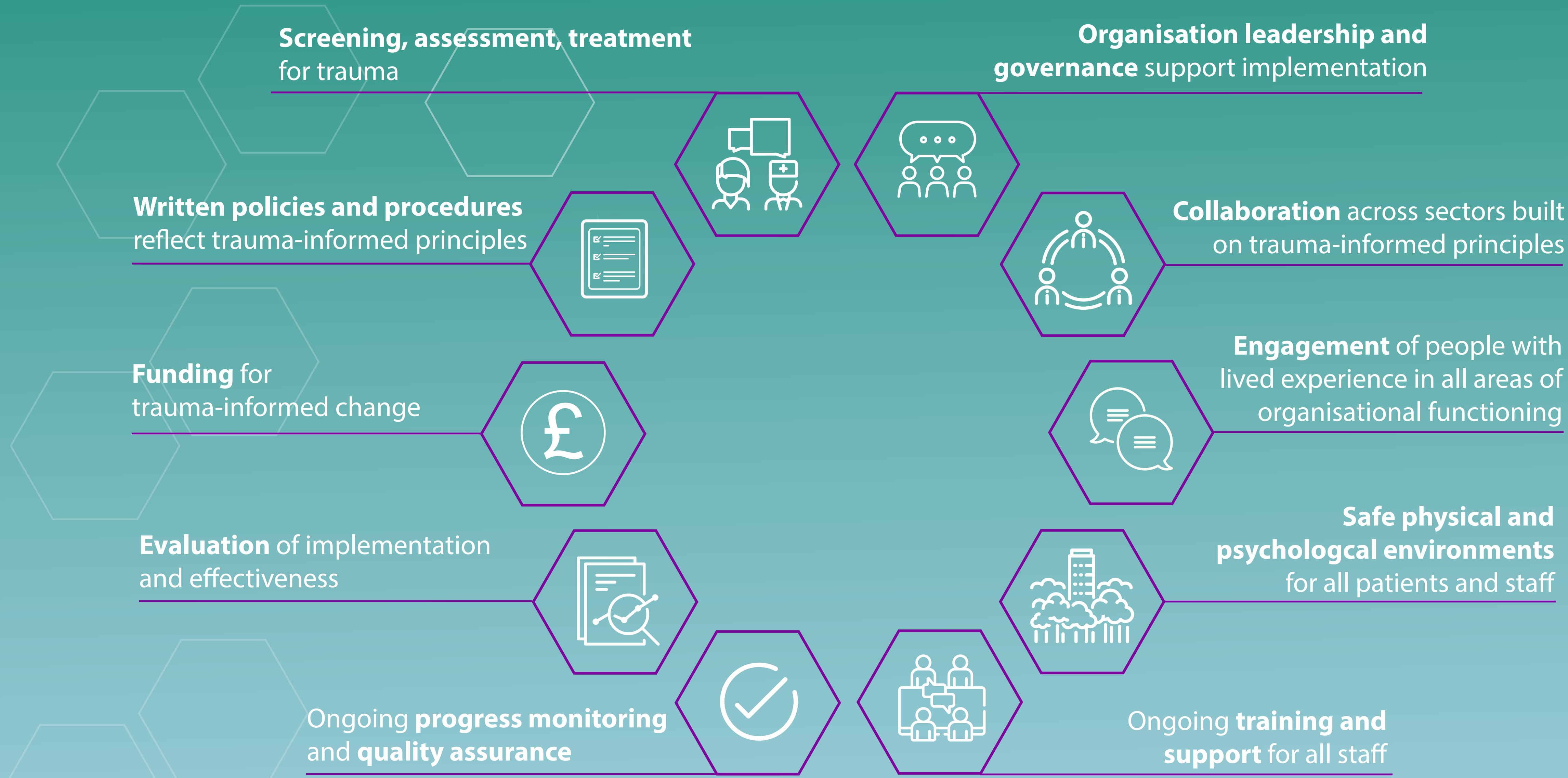


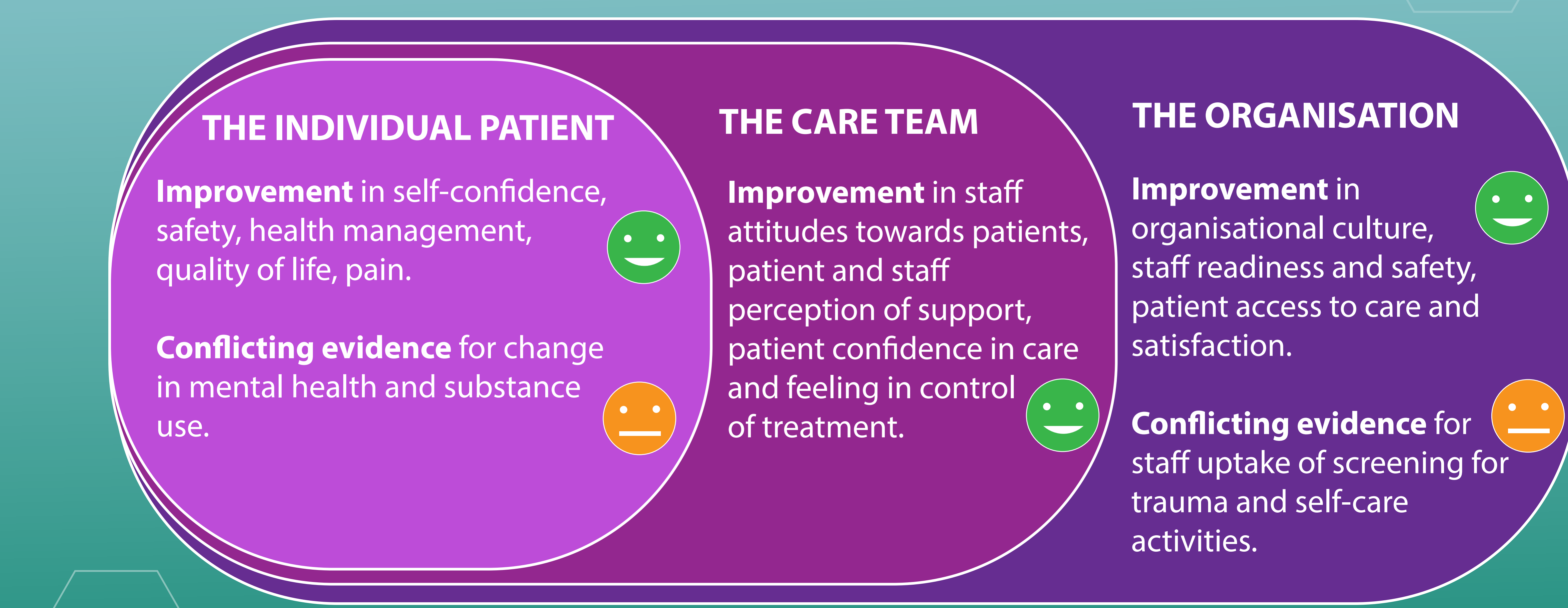
Evidence for implementing trauma-informed organisational change programmes in the UK

Findings from the TAP CARE Study, University of Bristol
bristol.ac.uk/tapcare-study

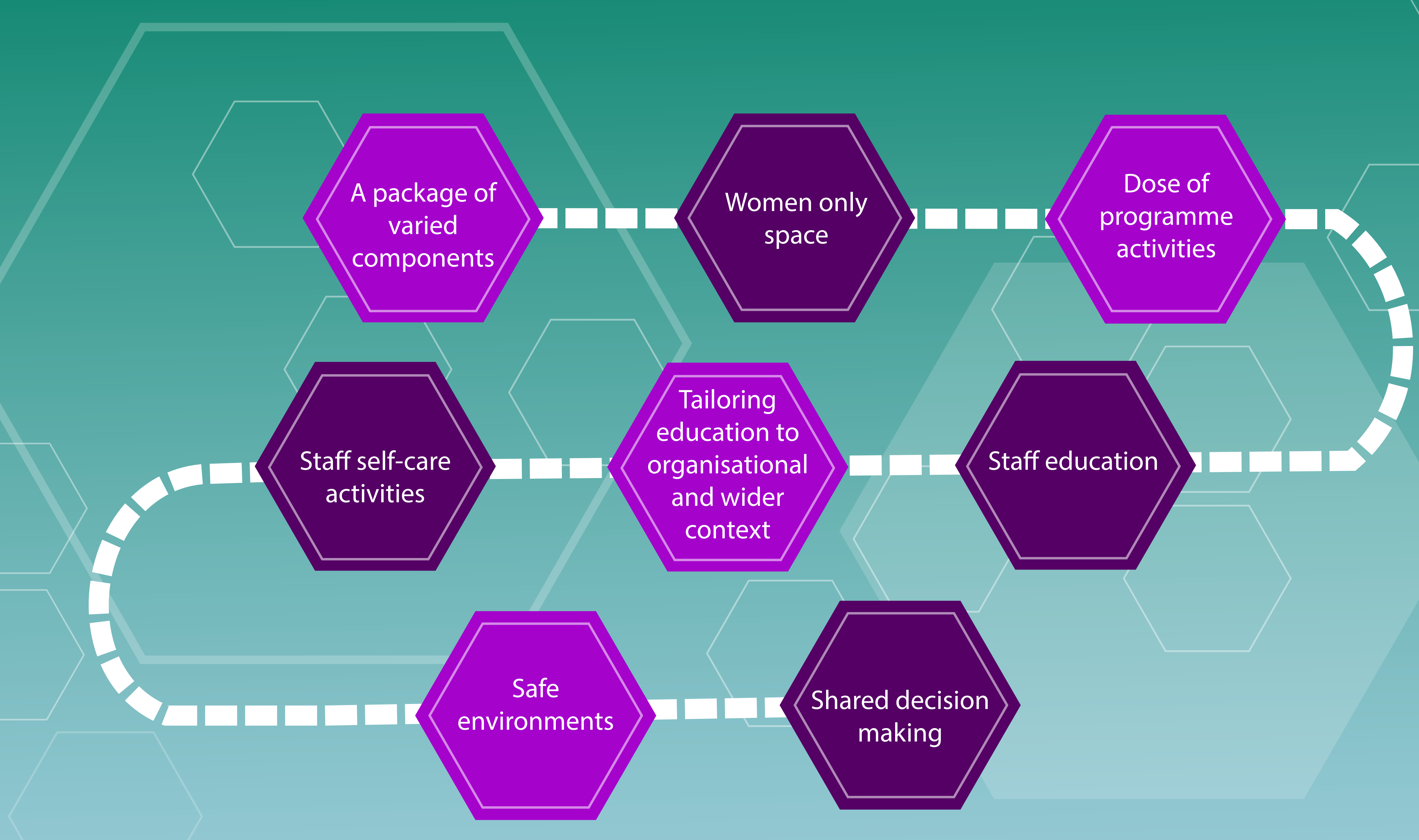
10 components for trauma-informed organisational change programmes



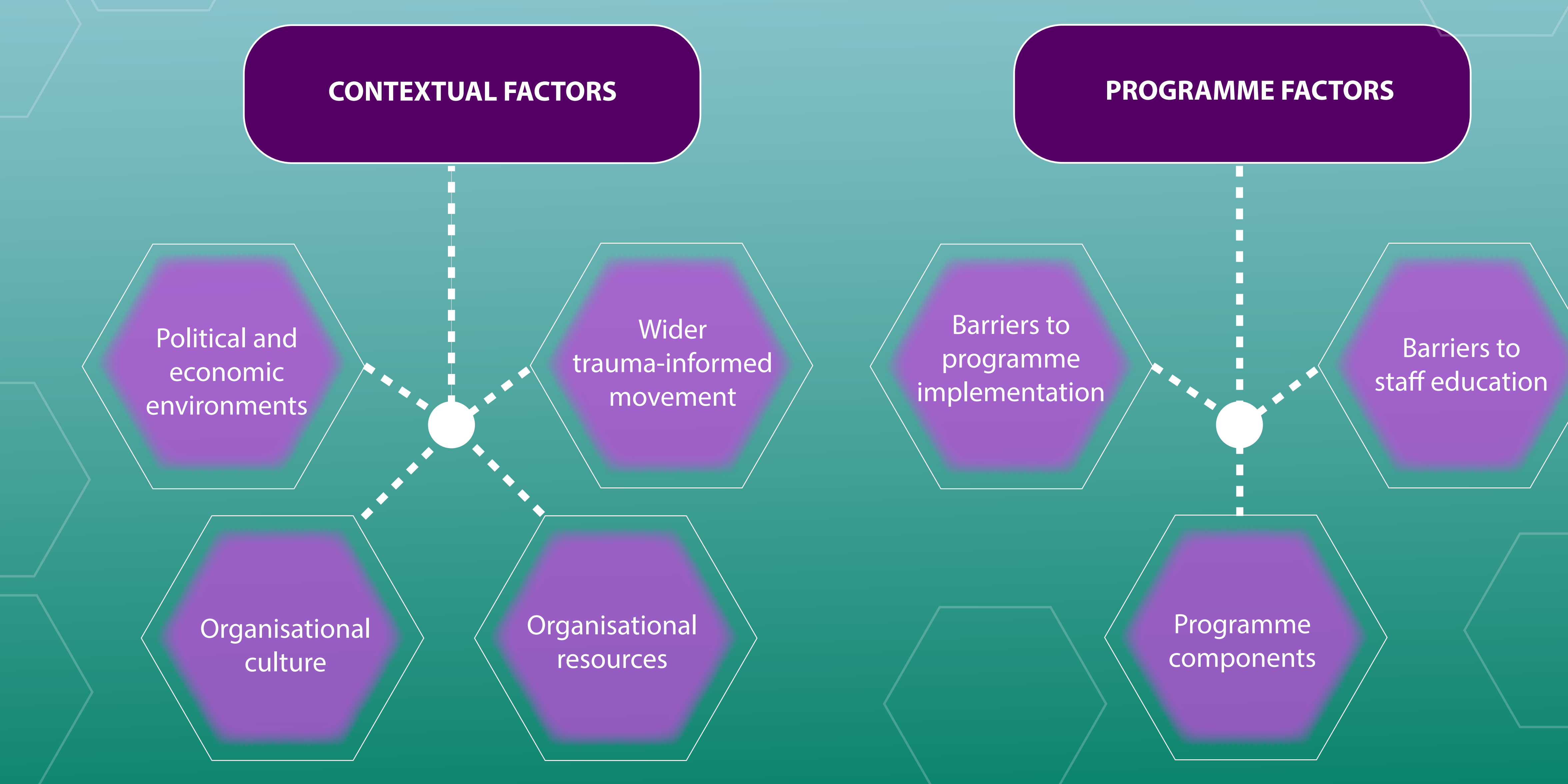
Effectiveness of trauma-informed organisational change programmes



8 mechanisms of trauma-informed organisational change programmes



7 factors impacting effectiveness of trauma-informed organisational change programmes



5 barriers to trauma-informed organisational change programmes being implemented successfully in the UK



Recommendations for stakeholders

